

Cuyahoga
Community
College



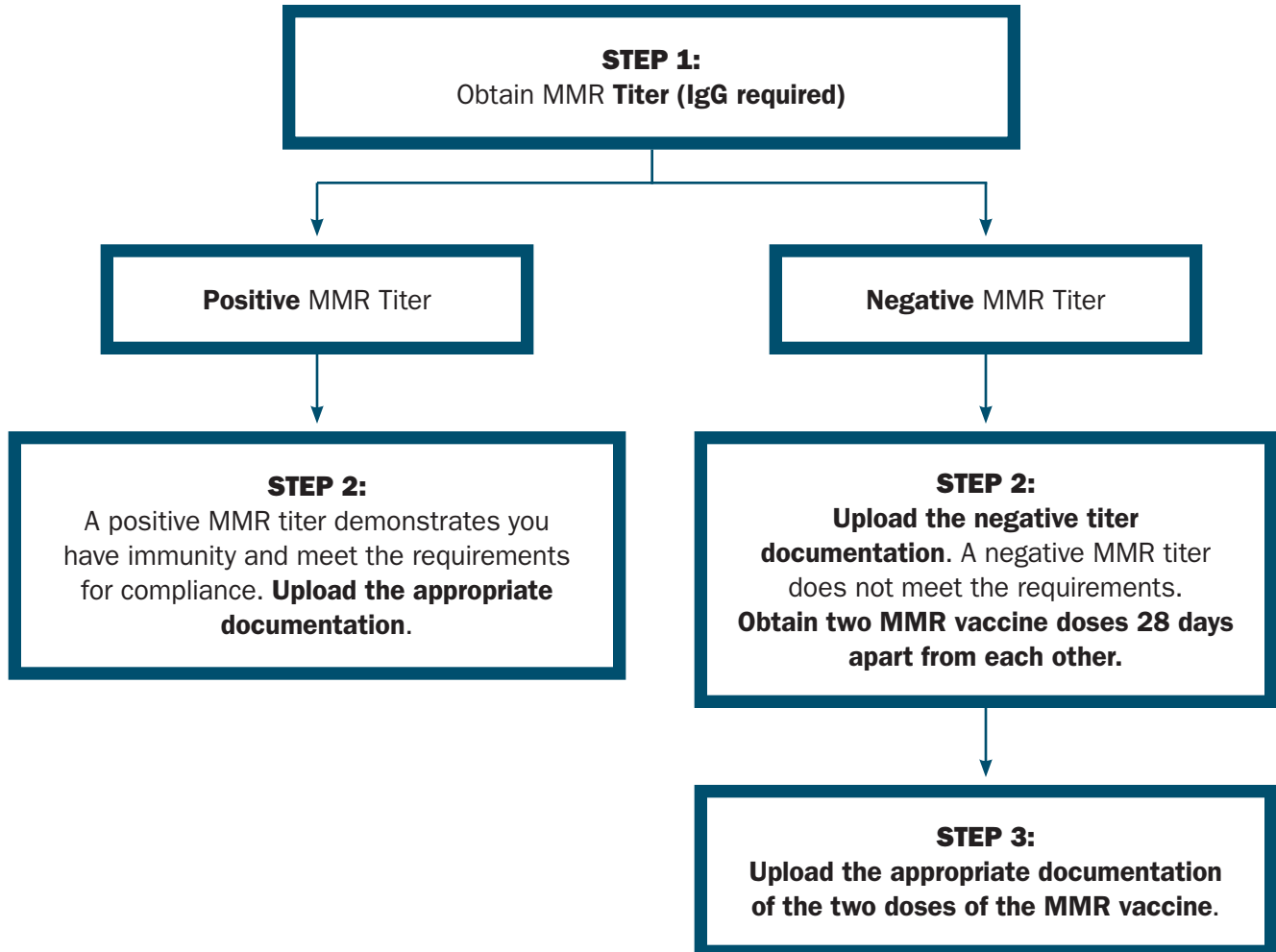
IMMUNIZATION AND HEALTH REQUIREMENTS

CLINICAL COMPLIANCE FLOW CHARTS

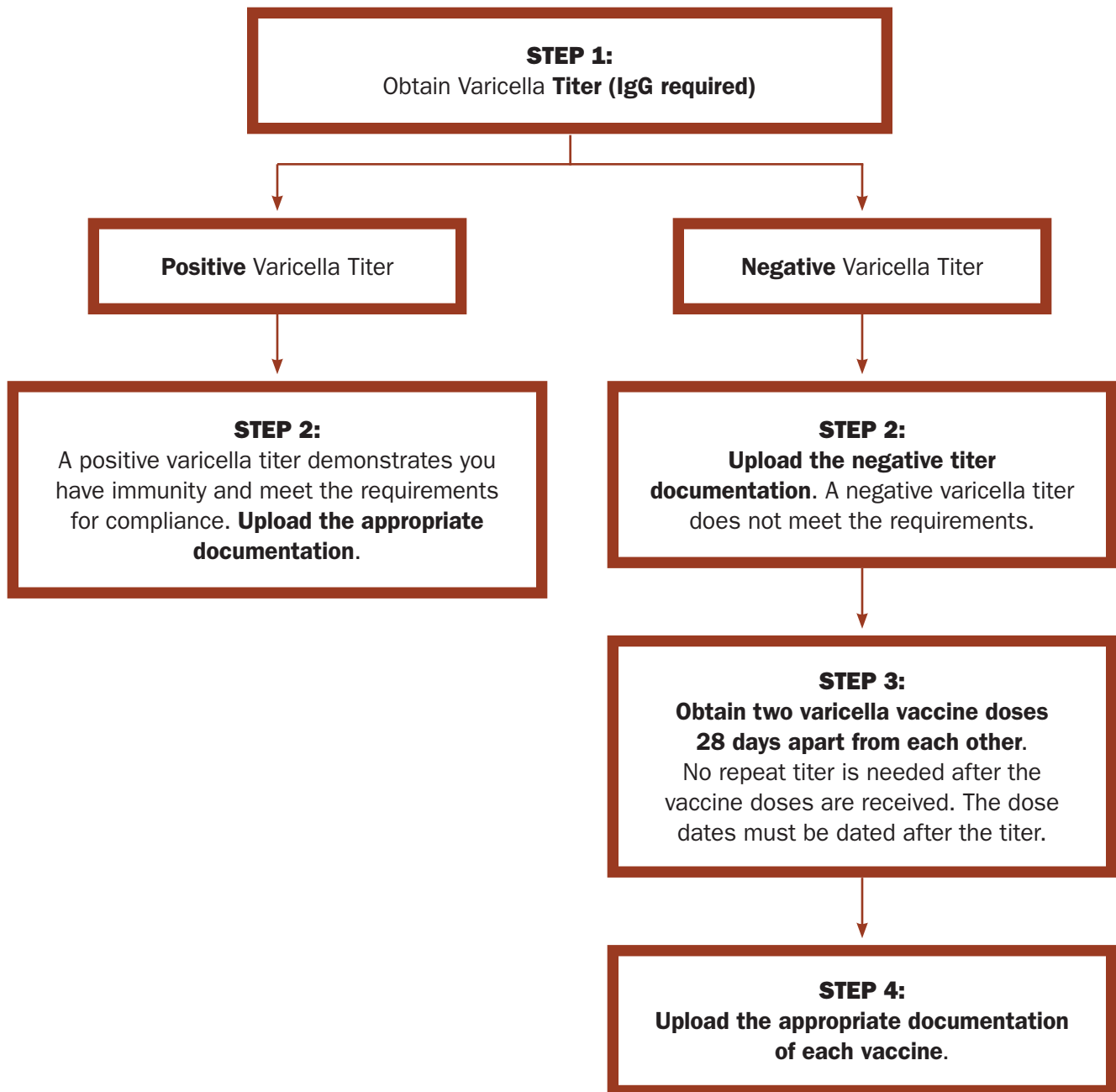
Adapted from Tri-C Radiography and Mammography onboarding materials.

MMR: Measles (rubeola), Mumps, Rubella

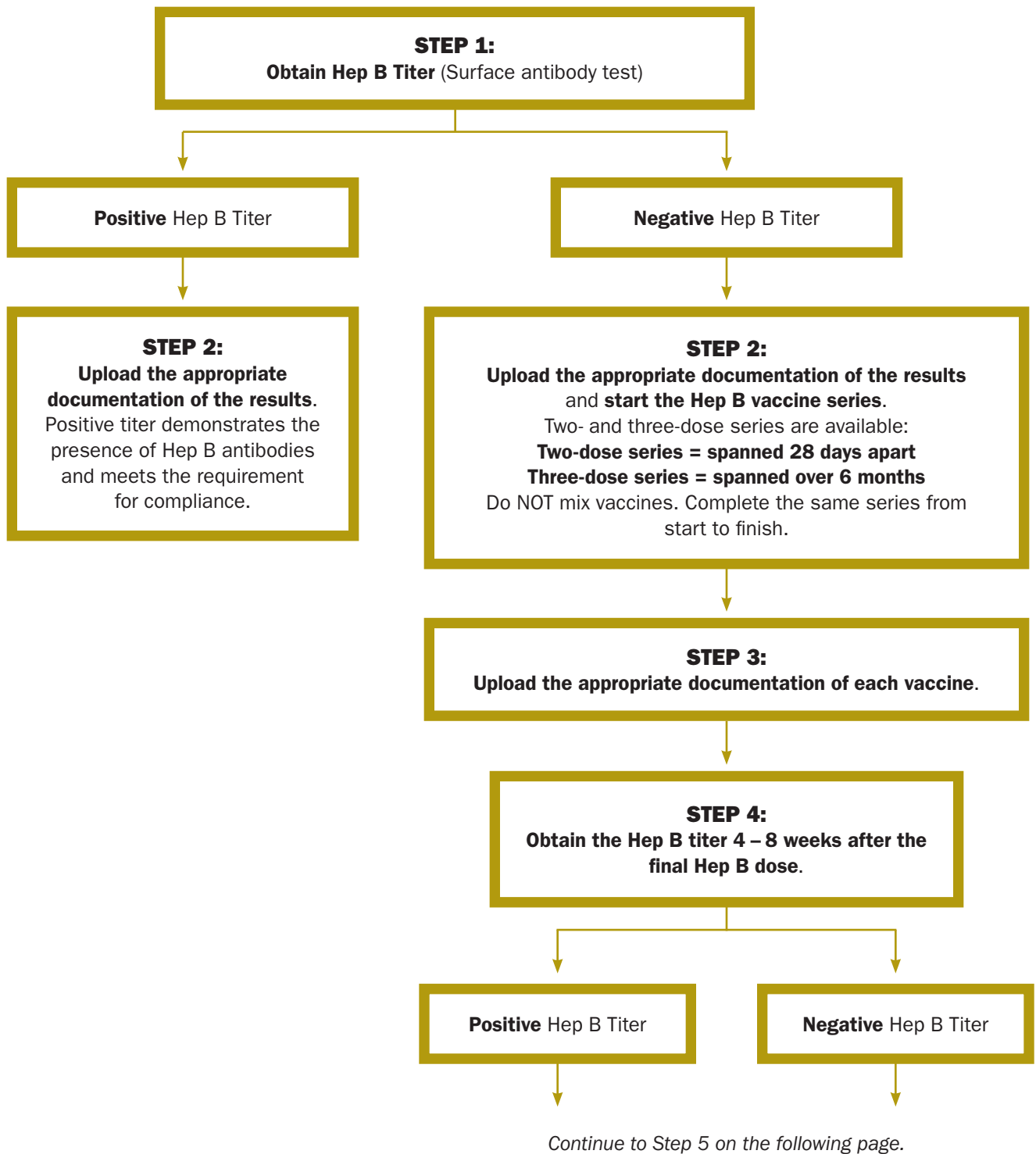
Note: Measles can also be called rubeola.
Rubeola (measles) and rubella are not the same.



Varicella (chicken pox)



Hepatitis B



Hepatitis B (continued)

Positive Hep B Titer *(continued)*



STEP 5:
**Upload the appropriate positive
titer documentation**

Positive titer demonstrates the presence of Hep B antibodies and meets the requirement for compliance.

Negative Hep B Titer *(continued)*



STEP 5:
**Upload the negative titer
documentation**

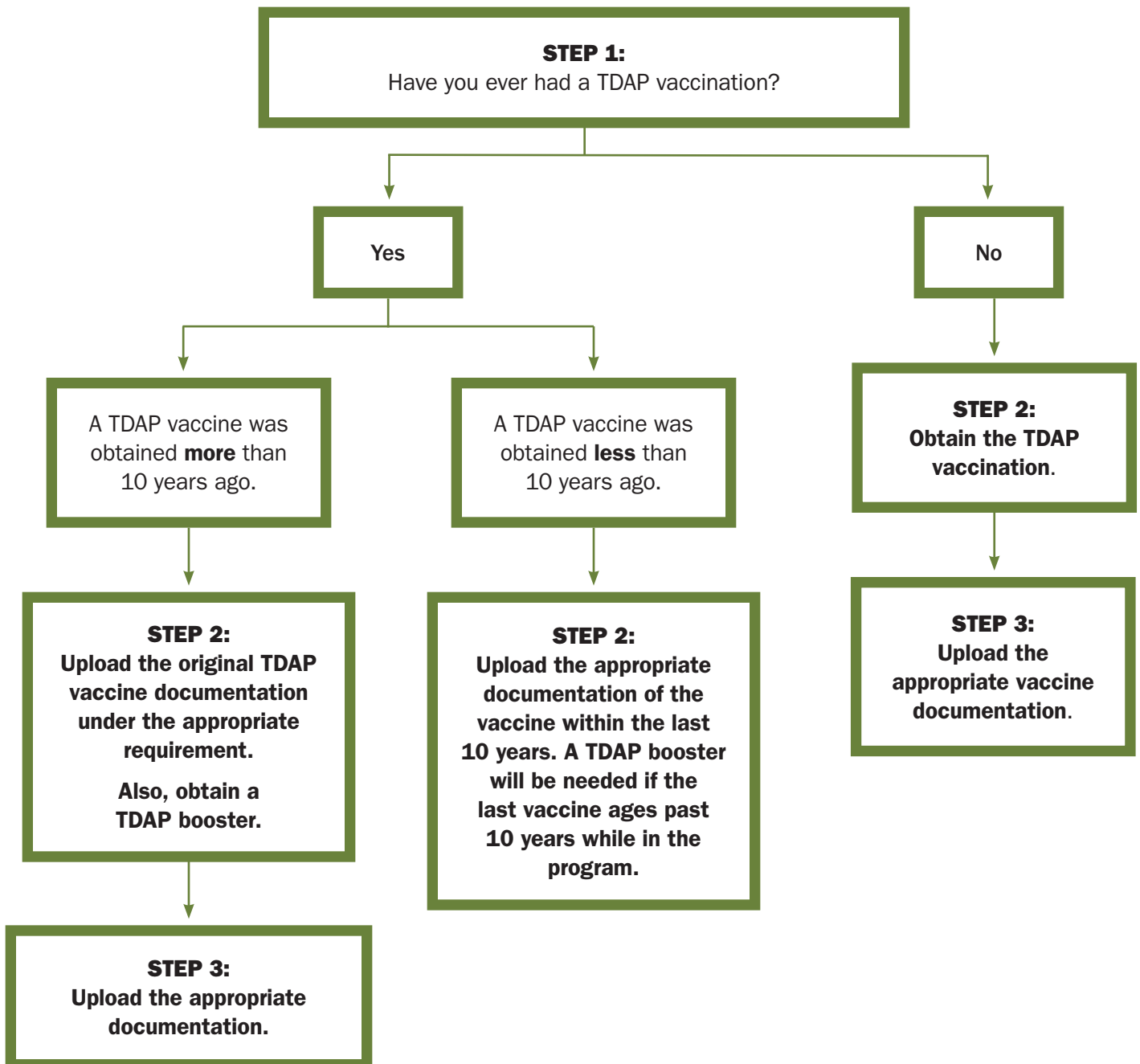


STEP 6:

Obtain a letter from your provider stating you are a non-converter or non-responder.

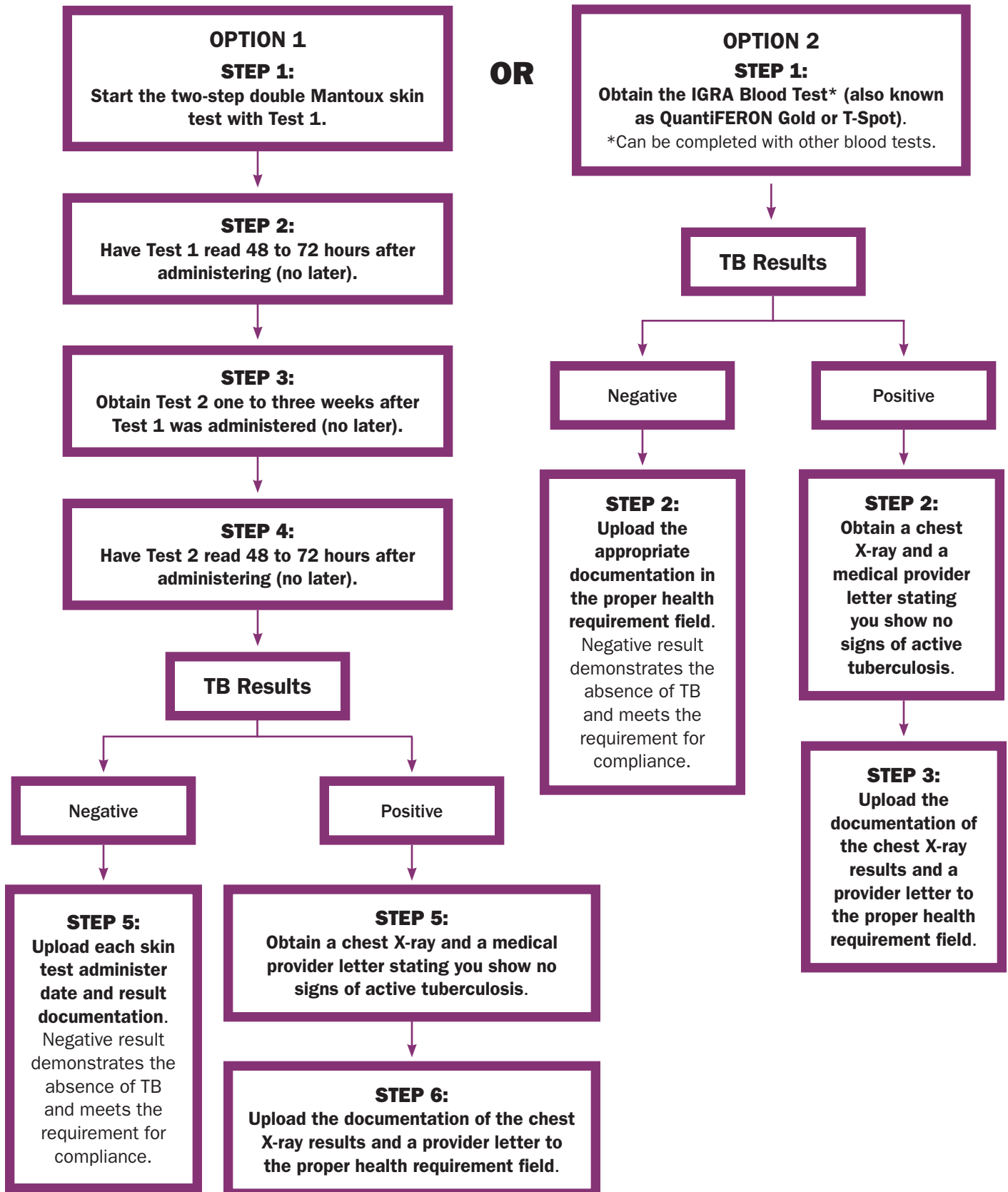
Upload the provider letter.

TDAP (tetanus, diphtheria and pertussis)

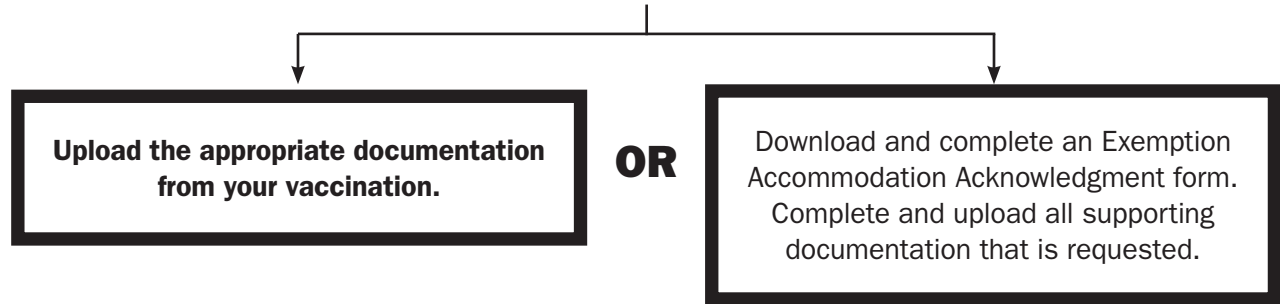


Tuberculosis (TB)

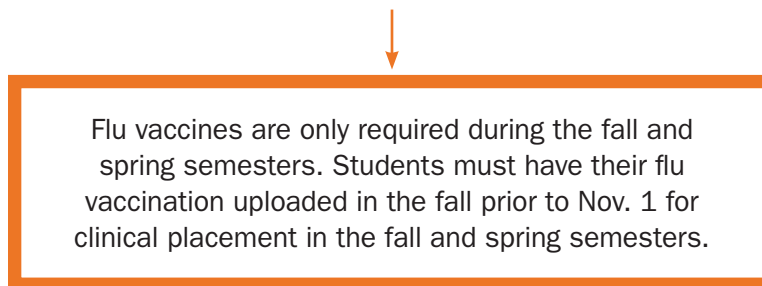
TWO OPTIONS AVAILABLE



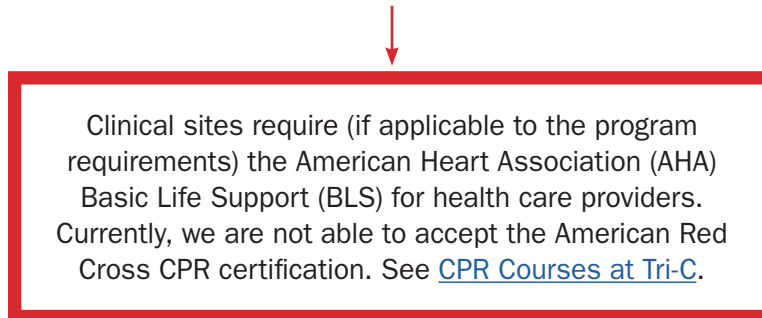
COVID



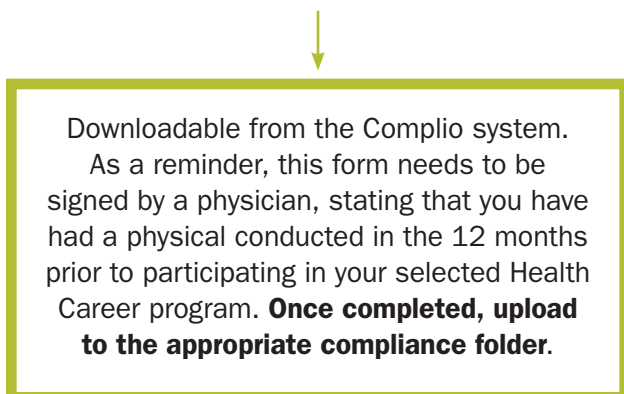
INFLUENZA (Flu)



CPR



Health Release Form



Health Insurance Attestation

